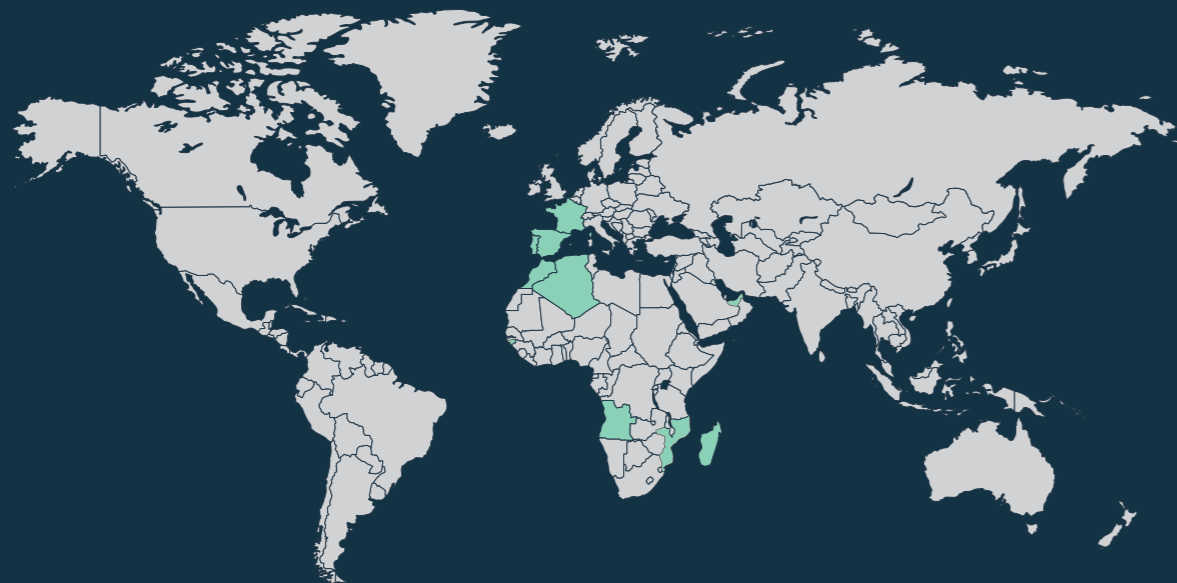


AROUND THE WORLD



PORTUGAL , SPAIN , FRANCE , ANGOLA  
CAPE VERDE , MOZAMBIQUE , GINEA-BISSAU  
ALGERIA , MOROCCO , MADAGASCAR  
UNITED ARAB EMIRATES

[www.trprofile.com](http://www.trprofile.com)

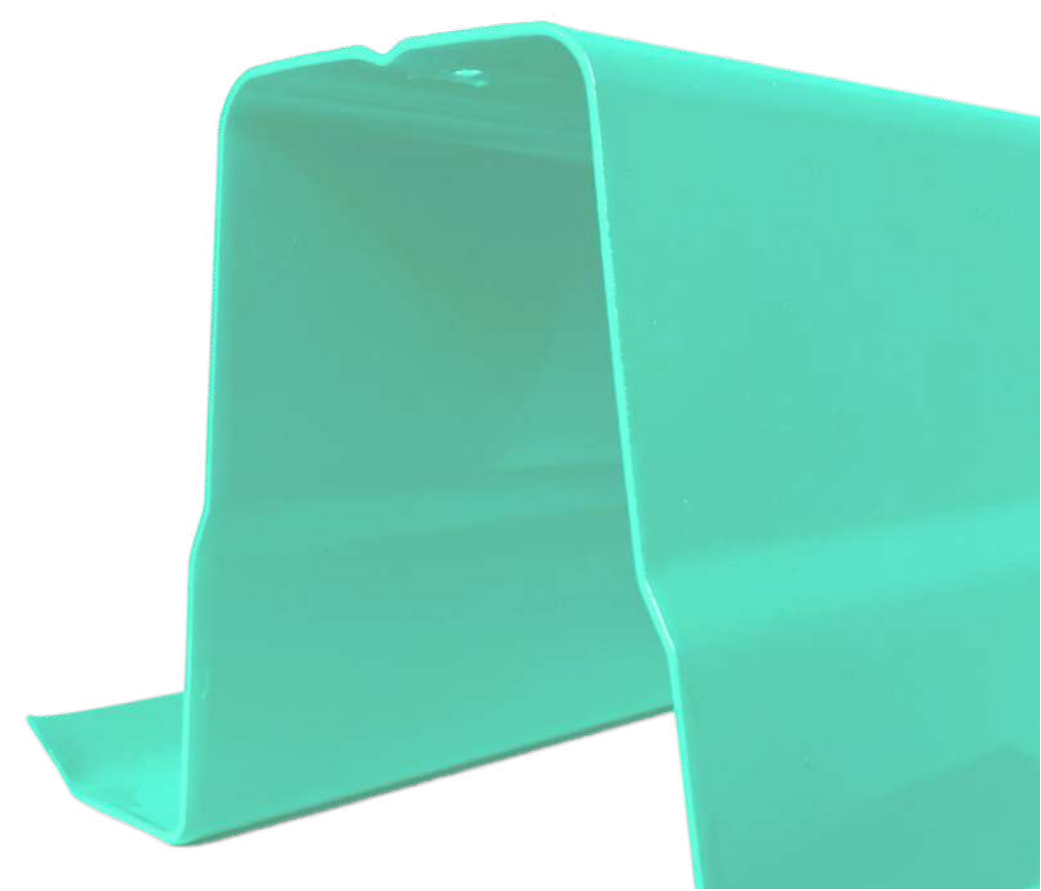
Zona Industrial de Campia, Lt. A2  
3670-056 Campia - Vouzela

E. comercial@trprofile.com



**TRPROFILE**  
STRUCTURES WITH ENERGY

BY **TABELARAIZ**



Perfil	Dimensões				Massa G	Área A	Área de pintura			Desenv. mm	Caraterísticas mecânicas			
	H	B	h1	t			I <sub>y</sub> mm <sup>4</sup>	W <sub>el,y</sub> mm <sup>3</sup>	I <sub>z</sub> mm <sup>4</sup>		W <sub>el,z,min</sub> mm <sup>3</sup>			
	mm	mm	mm	mm								kg/m	mm <sup>2</sup>	m <sup>2</sup> /m
CCTR 110x1.2	110	70	25	1.2	2,8	350,8	0,605	213,675	302,4	699559	12587	276086	6886	
CCTR 110x1.5	110	70	25	1.5	3,5	441,5	0,605	170,940	302,4	880479	15799	347487	8700	
CCTR 110x2.0	110	70	25	2	4,7	592,8	0,605	128,205	302,4	1182013	21115	466490	11753	
CCTR 110x2.5	110	70	25	2.5	5,8	738,4	0,605	104,285	302,4	1429000	25980	547500	13420	
CCTR 110x3.0	110	70	25	2	6,9	878,0	0,605	87,660	302,4	1689800	30720	641800	15710	
CCTR 140x1.5	140	70	25	1.5	3,9	500,3	0,668	171,282	334,0	1552524	22179	374657	8616	
CCTR 140x2.0	140	70	25	2	5,2	662,4	0,668	128,462	334,0	2043860	29198	487933	11205	
CCTR 140x2.5	140	70	25	2.5	6,5	822,0	0,668	102,769	334,0	2522317	36033	595652	13660	
CCTR 140x3.0	140	70	25	3.0	7,7	978,0	0,668	86,753	334,0	2988000	42690	698000	15980	
CCTR 160x1.2	160	70	25	1.2	3,4	418,4	0,721	212,183	360,7	1691984	20998	321066	7193	
CCTR 160x1.5	160	70	25	1.5	4,2	526,6	0,721	170,940	360,7	2129566	26379	404100	9084	
CCTR 160x2.0	160	70	25	2	5,6	707,0	0,721	128,205	360,7	2858870	35303	542490	12264	
CCTR 160x2.5	160	70	25	2.5	7,0	887,3	0,721	102,564	360,7	3588174	44173	680881	15480	
CCTR 160x3.0	160	70	25	3.0	8,1	1038,0	0,721	89,064	360,7	4093200	51160	73290	16250	
CCTR 210x1.2	210	70	25	1.2	3,8	476,4	0,821	213,675	410,7	3198712	30297	352358	7394	
CCTR 210x1.5	210	70	25	1.5	4,8	599,6	0,821	170,940	410,7	4025965	38078	443485	9336	
CCTR 210x2.0	210	70	25	2	6,4	805,0	0,821	128,205	410,7	5404720	50998	595363	12600	
CCTR 210x2.5	210	70	25	2.5	8,0	1010,3	0,821	102,564	410,7	6783475	63856	747241	15898	
CCTR 210x3.0	210	70	25	3	9,6	1215,7	0,821	85,470	410,7	8162229	76655	899120	19232	
CCTR 260x1.5	260	70	25	1.5	5,4	672,6	0,921	170,940	460,7	6671910	51036	474321	9512	
CCTR 260x2.0	260	70	25	2	7,2	903,0	0,921	128,205	460,7	8956810	68383	636759	12834	
CCTR 260x2.5	260	70	25	2.5	9,0	1133,3	0,921	102,564	460,7	11241711	85664	799198	16190	
CCTR 260x3.0	260	70	25	3	10,8	1363,7	0,921	85,470	460,7	13526611	102880	961637	19579	
CCTR 310x2.0	310	70	25	2	8,0	1001,0	1,021	128,205	510,7	13637642	87432	670050	13007	
CCTR 310x2.5	310	70	25	2.5	10,0	1256,3	1,021	102,564	510,7	17116632	109560	840981	16405	
CCTR 310x3.0	310	70	25	3	12,0	1511,7	1,021	85,470	510,7	20595622	131618	1011912	19836	

PT

Secções "C" caracterizadas como CCTR 110; CCTR 140; CCTR 160; CCTR 210; CCTR 260; CCTR 310;

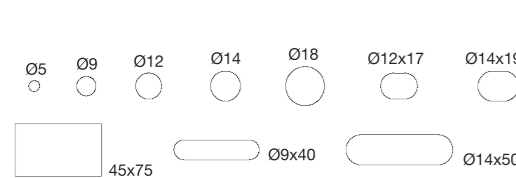
Propriedades indicadas na tabela dizem respeito à secção bruta do perfil;

Perfis comercializados em aço EN 10346: Galvanizado a quente Z:200, 275 | Zn+Mg+Al: ZM175, ZM250, ZM310 e ZM430.

A furação é efetuada de acordo com posição indicada pelo cliente com as ferramentas existentes:

PT

Ferramentas de furação:



EN

Profiles produced "C" section characterized as CCTR 110; CCTR 140; CCTR 160; CCTR 210; CCTR 260; CCTR 310;

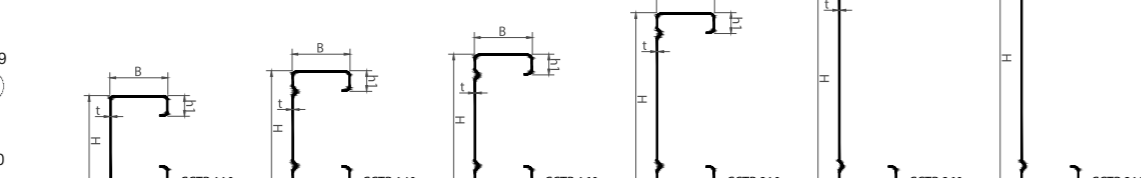
Properties indicated in the table relate to the gross section of the profile;

Profiles sold in steel EN 10346: Hot dip galvanized Z:200, 275 | Zn+Mg+Al: ZM175, ZM250, ZM310 e ZM430.

Drilling is carried out according to the position indicated by the customer with existing tools:

EN

Drilling tools:



FR

Profils produits section "C" caractérisée comme CCTR 110; CCTR 140; CCTR 160; CCTR 210; CCTR 260; CCTR 310;

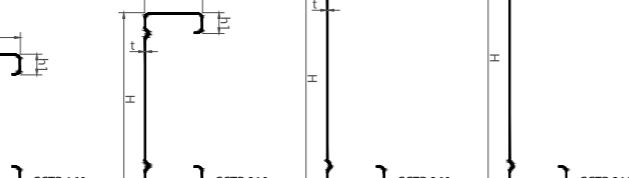
Les propriétés indiquées dans le tableau se rapportent à la section brute du profil;

Profils vendus en acier EN 10346: Galvanisé à chau Z:200, 275 | Zn+Mg+Al: ZM175, ZM250, ZM310 e ZM430.

Le perçage est effectué selon la position indiquée par le client avec les outils existants:

FR

Outils de perçage:



Perfil	Dimensões				Massa G	Área A	Área de pintura			Desenv. mm	Caraterísticas mecânicas				Furação *		
	H	B	b1	t			I <sub>y</sub> mm <sup>4</sup>	W <sub>el,y,min</sub> mm <sup>3</sup>	I <sub>z</sub> mm <sup>4</sup>		W <sub>el,z</sub> mm <sup>3</sup>	h1	h2	b2			
	mm	mm	mm	mm											kg/m	mm <sup>2</sup>	m <sup>2</sup> /m
ΩTR 60x1.0	60	140	70	1	1,88	232	0,482	256	241	134971	4380	367370	5248	-	-	105	
ΩTR 60x1.2	60	140	70	1.2	2,26	280	0,482	214	241	163090	5276	443905	6342	-	-	105	
ΩTR 60x1.5	60	140	70	1.5	2,82	352	0,482	171	241	205269	6608	558708	7982	-	-	105	
ΩTR 60x2.0	60	140	70	2	3,80	472	0,482	127	241	263800	8680	739000	10560	-	-	105	
ΩTR 110x1.2	110	188	70	1.2	3,52	436	0,751	214	376	766386	12850	1086160	11555	86	-	140	
ΩTR 110x1.5	110	188	70	1.5	4,39	548	0,751	171	376	964589	16132	1367064	14543	86	-	140	
ΩTR 110x2.0	110	188	70	2	5,86	736	0,751	128	376	1294928	21567	1835237	19524	86	-	140	
ΩTR 160x1.2	160	198	70	1.2	4,39	544	0,937	214	469	1821050	21751	1521055	15364	86	-	150	
ΩTR 160x1.5	160	198	70	1.5	5,48	684	0,937	171	469	2292011	27328	1914431	19338	86	-	150	
ΩTR 160x2.0	160	198	70	2	7,31	918	0,937	128	469	3076946	36577	2570058	25960	86	-	150	
ΩTR 160x2.5	160	198	70	2.5	9,14	1153	0,937	103	469	3861881	45772	3225685	32583	86	-	150	
ΩTR 210x1.2	210	248	70	1.2	5,67	698	1,203	212	602	3927313	34425	2730712	22022	86	185	190	
ΩTR 210x1.5	210	248	70	1.5	7,04	878	1,203	171	602	4942997	43271	3436930	27717	86	185	190	
ΩTR 210x2.0	210	248	70	2	9,39	1179	1,203	128	602	6635804	57963	4613961	37209	86	185	190	
ΩTR 210x2.5	210	248	70	2.5	11,73	1480	1,203	103	602	8328611	72591	5790992	46702	86	185	190	
ΩTR 210x3.0	210	248	70	3	14,08	1781	1,203	85	602	10021418	87155	6968023	56194	86	185	190	
ΩTR 260x1.5	260	248	70	1.5	8,01	1000	1,369	171	685	8008122	58786	4165629	33594	86	185	200	
ΩTR 260x2.0	260	248	70	2	10,68	1342	1,369	128	685	10750629	78774	5592215	45099	86	185	200	
ΩTR 260x2.5	260	248	70	2.5	13,35	1684	1,369	103	685	13493137	98689	7018800	56603	86	185	200	
ΩTR 260x3.0	260	248	70	3	16,02	2027	1,369	85	685	16235644	118531	8445386	68108	86	185	200	

\*Furação recomendada

PT

Secções ómega caracterizadas como ΩTR 60; ΩTR 110; ΩTR 160; ΩTR 210; ΩTR 260;

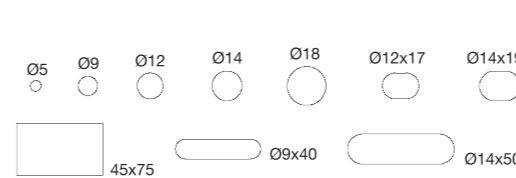
As propriedades indicadas na tabela dizem respeito à secção bruta do perfil;

Perfis comercializados em aço EN 10346: Galvanizado a quente Z:200, 275 | Zn+Mg+Al: ZM175, ZM250, ZM310 e ZM430.

A furação é efetuada de acordo com posição indicada pelo cliente com as ferramentas existentes:

PT

Ferramentas de furação:



EN

Profiles produced omega section characterized as ΩTR 60; ΩTR 110; ΩTR 160; ΩTR 210; ΩTR 260;

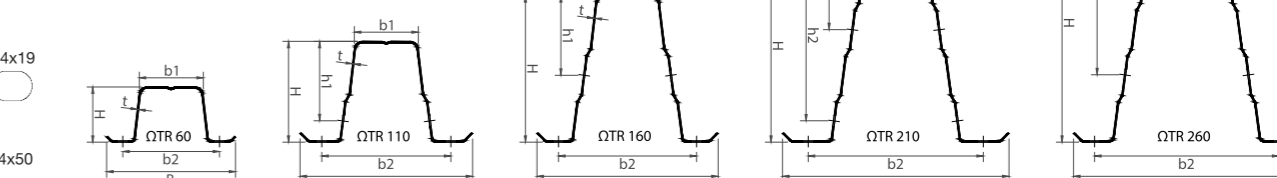
Properties indicated in the table relate to the gross section of the profile;

Profiles sold in steel EN 10346: Hot dip galvanized Z:200, 275 | Zn+Mg+Al: ZM175, ZM250, ZM310 e ZM430.

Drilling is carried out according to the position indicated by the customer with existing tools:

EN

Drilling tools:



FR

Profils produits section oméga caractérisée ΩTR 60; ΩTR 110; ΩTR 160; ΩTR 210; ΩTR 260;

Les propriétés indiquées dans le tableau se rapportent à la section brute du profil;

Profils vendus en acier EN 10346: Galvanisé à chaud Z:200, 275 | Zn+Mg+Al: ZM175, ZM250, ZM310 e ZM430.

Le perçage est effectué selon la position indiquée par le client avec les outils existants:

FR

Outils de perçage:

